



CHRIS SPARKS

Architectural Portfolio

COMPANY PROFILE

Chris Sparks Architecture is a well-established architectural practice bringing fresh and innovative concepts to the industry. We pride ourselves on professional and personalized service. We are based in Johannesburg; however we work throughout the country, and have completed numerous homes in Nelspruit, White River, Nottingham Road, Plettenberg Bay and on the garden route as well as many luxury bush lodges in the Lowveld. We have also recently branched out and are currently busy with projects in Zimbabwe and Botswana. The Chris Sparks Architecture team is comprised of a dynamic group of talented individuals. As part of our values, we strive to incorporate sustainable environmental practices into our designs. We explore every opportunity to practice “green” design, from the simplest detail to the highest technical application. We work towards realising an aesthetic that is as diverse as our country by using local materials, colour, and texture. We don't limit ourselves to one particular architectural style as we believe each client's needs and requirements are unique. Each site also offers unique design opportunities and requires unique design responses. We have worked on contemporary steel and concrete homes to traditional colonial farmhouses each with its own distinctive and unique feel and design solution. We are highly passionate about architecture and have a passion for design, the team understand that's one's homes is generally the biggest financial investment that one makes and strives to maximize the value in each project.

CHRIS SPARKS ARCHITECTURE TEAM

Chris Sparks

Director and Principal Architect
B.Sc(Arch) 2006
B.Arch (Hons) 2008
M.Arch(Prof) 2009
SACAP Pr(Arch)21467

Shafeeqah Ellemdeen

Architectural Draughtsman

Lauren Friday

Professional Senior Architectural
Technologist
B.Tech (2017)
SACAP Pr(SAT) 49345203

Lourina Grobler

Candidate Architect
B.Tech (2018)
M.Arch (2020)

Lindie Sparks

Office Manager

Nicole Botes

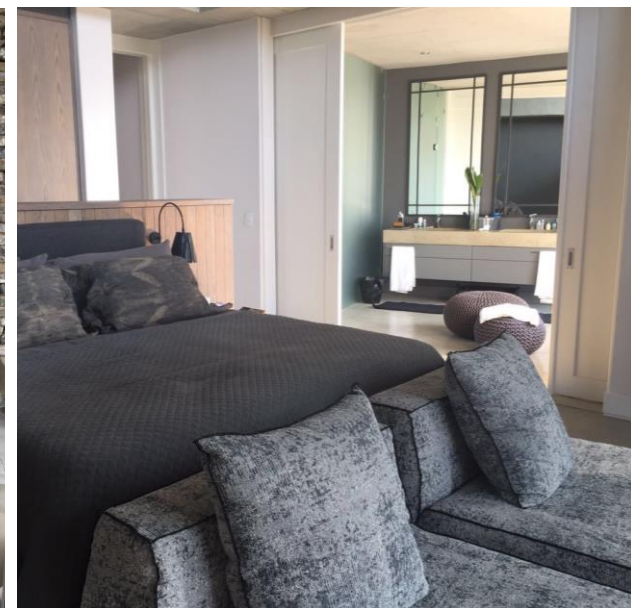
PA to Chris Sparks

5 & 6 MJEJANE



The brief called for the design of a contemporary bush lodge, on the banks of the Crocodile River, for two young families. The design approach was for the lodge to be well integrated within nature & to maximise indoor/outdoor living. This was achieved by linking interior & exterior spaces through the use of a central courtyard & by allowing interior spaces to flow onto large open decks which face the river. Bomas & outdoor seating spaces have been used to create an intimate feel within nature. This unique lodge really embodies “barefoot luxury”.

5 & 6 MJEJANE



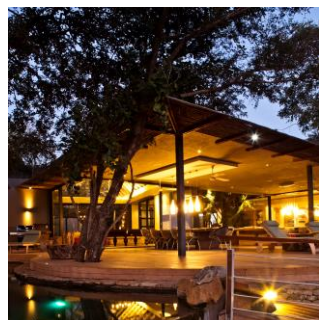
6/1 MJEJANE



AMALA 8/1 MJEJANE



ELEMENTS LODGE



ELEMENTS LODGE

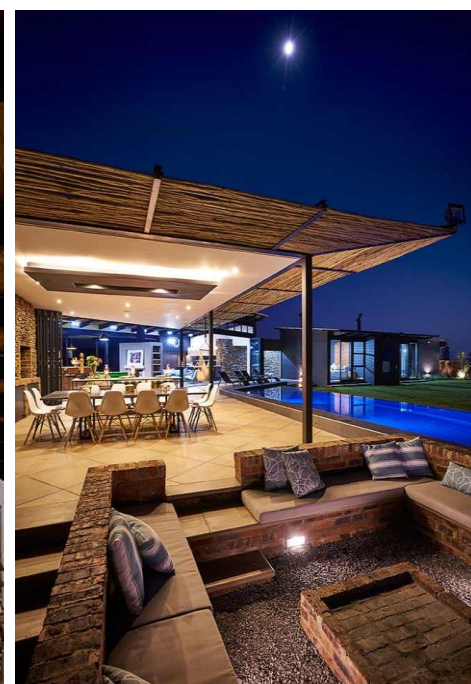
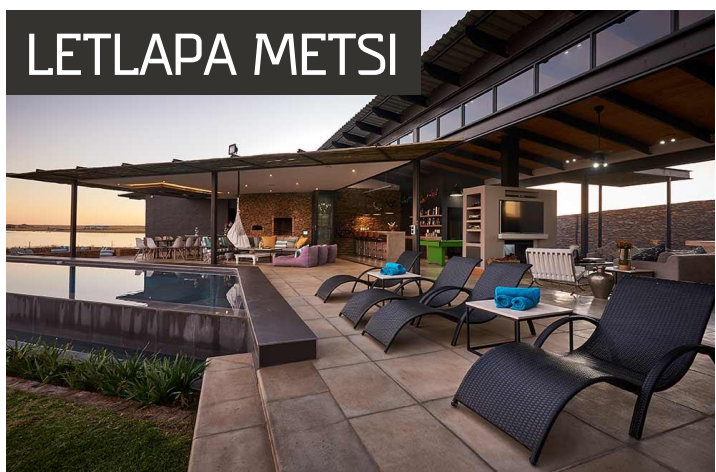


This opulent & luxurious lodge was designed to respond to its site. The footprint of the lodge has been set out as not to interfere with existing natural site features. The client's brief was to create a contemporary bush lodge using a large open plan to allow a large extended family to come together. The design approach was to emulate a tented camp with all principle areas being housed under large tent like thatch structures. Eco & passive design principles have been applied throughout the design. The lodge has been integrated into nature using earthy materials, a chemical free pool that connects the lodge into the natural rocks on site & cavity doors which when folded blur the lines between interior & exterior spaces.

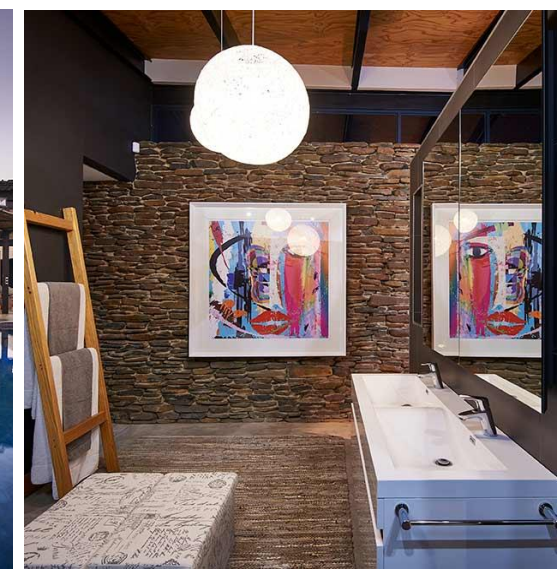
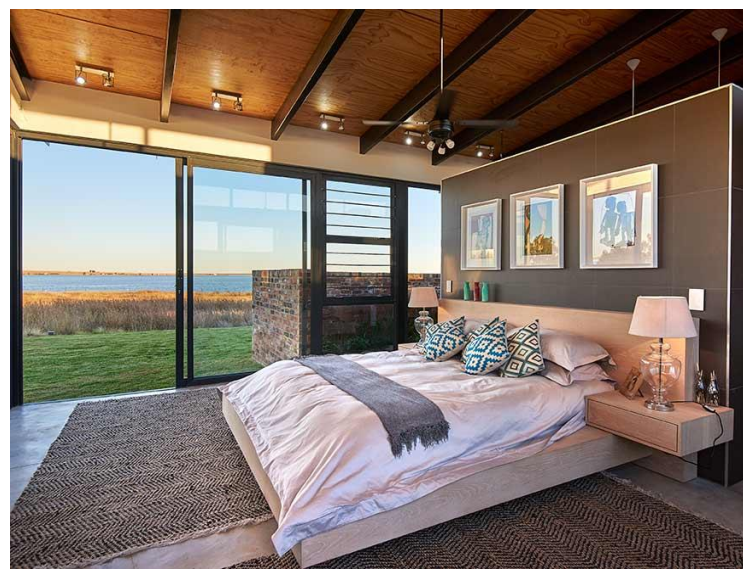
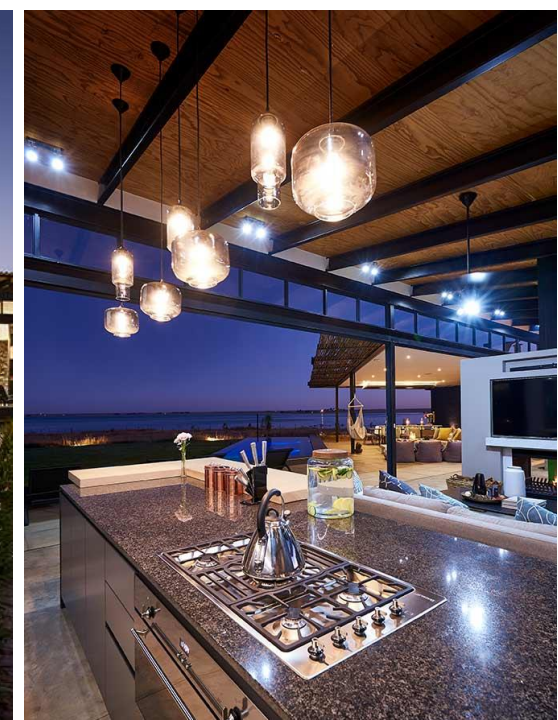
CHUNDU ISLAND



LETLAPA METSI



This eco-friendly, off grid home has been designed for entertaining. When thinking of a word to best describe the house, “barefoot luxury” comes to mind. The living room, kitchen and games room all open up with glass stacking doors to the expansive patio with majestic, elevated views of the Vaal Dam. The main house has 5 bedrooms and 3.5 bathrooms and there is an additional outside en-suite guest room. All rooms have full height glass doors that open onto the garden with unobstructed views over the Vaal Dam. A stunning boma, braai and pizza oven all sit adjacent to the stunning rim flow pool and large covered patio comfortably seating 14. The house doesn’t have curtains to enhance the indoor-outdoor feel of the home.



SUNSET KRUGER LODGE

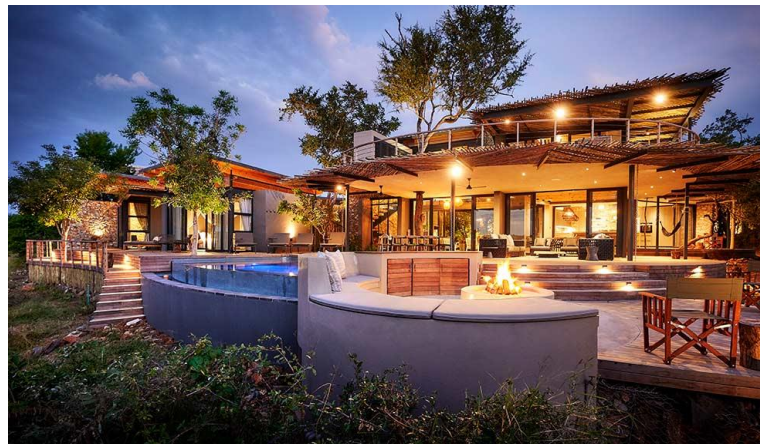


SUNSET KRUGER LODGE





Set on the banks of the Crocodile River with spectacular views overlooking Kruger National Park, this is an inside-outside home where nature and the property are in harmony with each other. The home seems to grow from and blends with its natural surroundings. The numerous trees, abundance of glass windows and doors as well as the rock walls blur the lines between the inside and the outside. The colour palette used was selected to encourage a relaxed state of mind while ensuring the surrounding views remain the focus. The perfect selection of décor pieces, furniture and fixtures creates a well- put together interior that is contemporary and encourages you to unwind and appreciate the peace that can be felt here. The property had numerous trees which could not be removed so the trees and rooms were seamlessly incorporated. The expansive wooden decks with deep undercover verandas feature a large rim-flow pool.



NEW LODGE MJEJANE



50/1 MJEJANE



55/1 MJEJANE



This stunning contemporary lodge in Mjejane Game Reserve is inspired by traditional Zulu Villages. The dome shape thatch roofs are a typical feature in Zulu architecture. The dome shape prevents the harsh Southern African heat without the usage of external energy. The materials needed for these dwellings are easily sourced from local areas.

The use of wooden decks, thatch roofs and stone walls all create a feeling of a luxurious bush life.

The colours and materials used are in harmony with nature and allow you to appreciate the beauty around you.



SIMBINI ESTATE



SIDLALA

